

DISTRICT LEADERS IDENTIFY THE NEEDS OF TEACHERS IN LESSON PLANNING, CURRICULUM, AND ASSESSMENT



Achieving instructional goals is more difficult than ever. Educators must meet standards and adapt to diverse student needs, often with limited resources and even less time.

To better understand these challenges, a survey developed in partnership between *District Administration* (DA) and Gale, part of Cengage Group asked school district leaders what their teachers needed most when it comes to curriculum, instruction, and assessment. Superintendents, technology leaders, academic leaders, curriculum directors, and other educators identified the priorities for their districts.

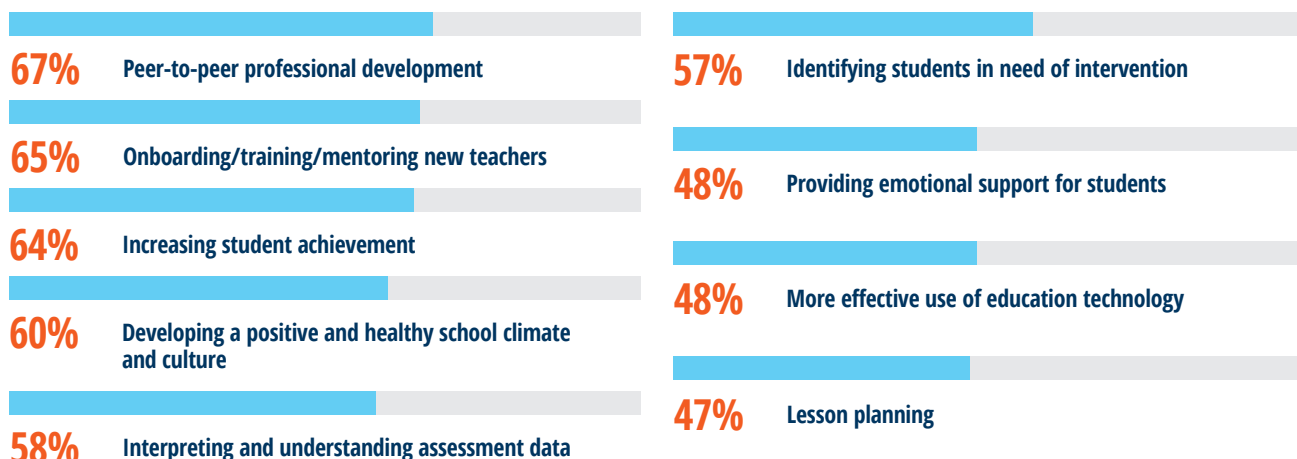
TEACHER COLLABORATION IS ESSENTIAL TO SUCCESS

Nearly 9 out of 10 school and district leaders responded that it's important or very important for teachers to collaborate with one another about their everyday instructional practices.

When asked specifically which areas would most benefit from more teacher collaboration, top answers included: peer-to-peer professional development (67%), onboarding/training/mentoring new teachers (65%), increasing student achievement (64%), and developing a positive and healthy school climate and culture (60%).



IN WHICH AREAS WOULD TEACHER COLLABORATION BE MOST BENEFICIAL TO YOUR SCHOOL OR DISTRICT?

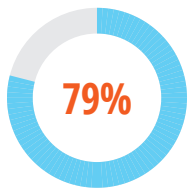


DIFFERENTIATION AND HIGH-QUALITY SOURCES ARE KEY IN LESSON PLANNING

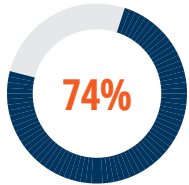
Administrators were also asked about the needs and challenges of their teachers when it came to lesson planning. When asked to select which features of a lesson planning tool would be most helpful to their teachers, the leading answers by far were: tools to make differentiating instruction easier (79%) and access to high-quality instructional content and sources (74%).



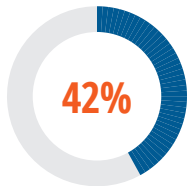
WHICH OF THE FOLLOWING FEATURES OF A LESSON PLANNING TOOL WOULD BE MOST HELPFUL TO TEACHERS IN YOUR SCHOOL/DISTRICT?



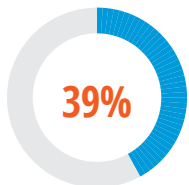
Tools to make differentiating instruction easier (leveled content, etc.)



Access to high-quality instructional content and sources



Accessibility features for students (translation, OpenDyslexic font, text-to-speech, etc.)



Ready-to-use lesson plans

Respondents also identified the subject areas where teachers are in most need of help with lesson planning, and English Language Arts (ELA) and social and emotional learning (SEL) were among the top answers.

IN WHICH SUBJECT AREAS ARE THE TEACHERS AT YOUR SCHOOL/DISTRICT MOST IN NEED OF HELP WITH LESSON PLANNING?

46%

English Language Arts (ELA)

45%

Social and Emotional Learning (SEL)

36%

Diversity, equity, and inclusion (DEI)

35%

Science

34%

Literacy

24%

History

23%

Career and Technical Education (CTE)

RELEVANT, INTEGRATED TOOLS SUPPORT INSTRUCTION



Nearly 90% of respondents said that it was some level of challenge for their teachers to *find and access relevant, curriculum-aligned multimedia content to support daily instruction*, while 85% said it was some level of challenge for their teachers to conduct assessments that are aligned to the curriculum.

And when evaluating instruction resources, working with teachers' current workflows is crucial. Nearly 80% of respondents said it's important or highly important for teachers to have access to a digital instruction tool that *integrated into existing learning management systems (LMS)*.

HELP YOUR TEACHERS ACHIEVE THEIR INSTRUCTIONAL GOALS

It's clear that support for teachers is essential. But it doesn't look the same for everyone in your learning community. Discover what's been missing from your teacher's toolkit—**Gale In Context: For Educators**.

As a curriculum and instruction tool for all who touch on teaching and learning, this award-winning resource equips educators with high-quality, current, digital content to pull into everyday instruction. The up-to-the-minute content—along with hundreds of standards-aligned lesson plans—allows educators to differentiate learning, while leveled content and accessibility tools support all students.

A teacher's time is precious and worth saving. Prevent burnout by making it easier for educators to collaborate across teams and keep students engaged—all within their existing LMS workflows. Because when teachers succeed, students can too.



Equip your educators. Learn more at [gale.com/districtsurvey](https://www.gale.com/districtsurvey).