

Police swoop on isolated Leatherslade Farm

Hide-out of Great Train Robbery gang



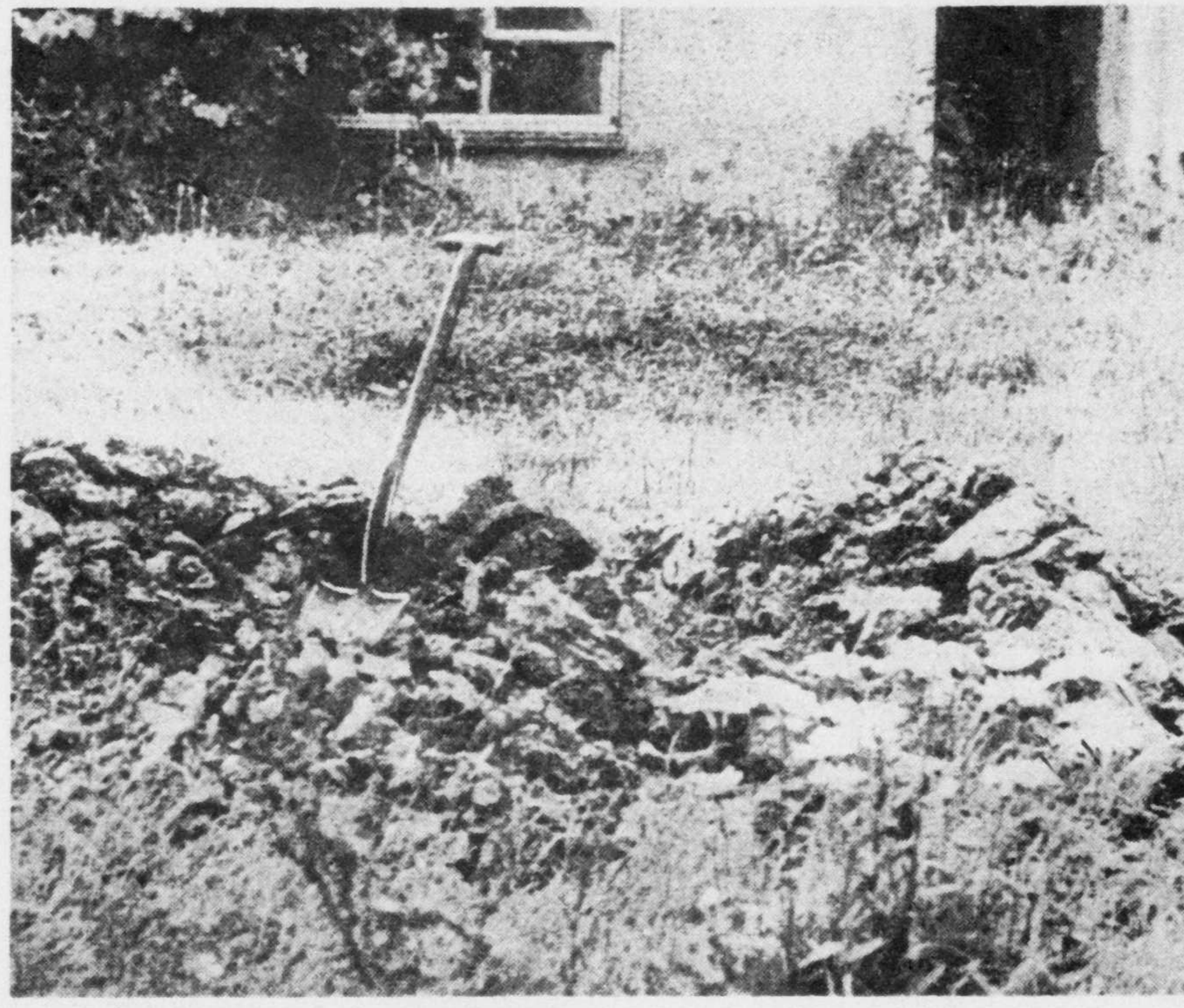
At the back of Leatherslade Farm, near Brill, Bucks, which was discovered yesterday as the hide-out used by the gang that carried out the £2,500,000 mail train robbery at Cheddington, Det. Supt. Malcolm

Fewtrell, head of the Bucks C.I.D., inspects an unfinished pit dug by the raiders.

Right: A spade left by the gang in the 3ft deep, 4ft wide freshly-dug pit.



The half-mile long track linking the isolated farm buildings with the B.4011, Thames-Bicester road (background).



Det. Supt. Gerald McArthur, of Scotland Yard, standing by the rough track near the farm buildings.

EDUCATIONAL section containing various advertisements for schools, colleges, and educational services. Includes: LONDON COLLEGE OF SECRETARIES, WOLSEY HALL, OXFORD, PHILLIPS & RANDLE LTD., THE BERLITZ SCHOOL OF LANGUAGES, CRIPPLEGATE SECRETARIAL COLLEGE, COLLEGE OF JOURNALISM, OXFORD AND COUNTY SECRETARIAL COLLEGE, THE BERLITZ SCHOOLS OF LANGUAGES, BOLTON TECHNICAL COLLEGE, MIDDLESEX HIGHER SECRETARIAL COLLEGE, MACHINE SHORTHAND, RADIO OFFICERS, WEST LODGE PARK, BOURNEMOUTH GLENROY HALL HOTEL, SEASIDE BOURNEMOUTH GROSVENOR HOTEL, A.A. KNOWLE HOTEL, SEAVIEW, ISLE OF WIGHT PIER HOTEL, TORQUAY, CUMBERLAND HOTEL, EASTBOURNE THAT AUTUMN SUN-SPOT, HOLIDAY ACCOMMODATION, ST. AGNES, DANFORTH HOTEL, BATTERSEA PARK, MADAME TUSAUDS LTD., THE BUILDING CENTRE, RESTAURANTS, LE PETIT MONTMARTRE, LOUIS HOUSE, YOUNG'S, DANCING, AIR TRAVEL, JUST THE TICKET?, THOS. COOK & SON LTD., and EXHIBITIONS.

TO-DAY'S BROADCASTING PROGRAMMES section listing radio and television schedules. Includes: B.B.C. Channels 1-5, Midlands Channel 8 (A.T.V.), I.T.A. Channel 9 (A-R), 11.5, News; Dateline; Weather; 11.20, Professional Wrestling; 12, Epilogue; 1.30-1.35, News; 5, Lone Ranger; 5.25, Fascinating Facts; 5.50, News; 6, Town and Around (S. East); 6.25, Ask Me Another; 6.50, Tonight; 7.29, News; 7.30, Sykes & a Camp; 7.55, Taxi; 8.40, Athletics—England v Italy; 9.15, News; 9.25, Zero One; 9.50, This Is Your Life—Dame Alicia Markova; rpt. 10.20, Go Tell It On the Mountain; 10.45, Alex Bradford talks to Kenneth Griffith; with Princess Stewart; 10.55, News Extra; 11.7-11.37, For Welsh viewers—Nat. Youth Orch. of Wales; 11.5, News; Dateline; Weather; 11.20, Professional Wrestling; 12, Epilogue; Midlands Channel 8 (A.T.V.) 12.45 p.m., Thought for the Day; 12.47-1.22, Lunch Box (1, News); 5, London; 5.25, Scarlet Pimpernel; rpt. 5.55, News; Regional News; 6.15, London; 6.45, Midland Farming; 6.55, News; 6.55, Flintstones; 6.50, Westward Diary; 6.50, Regional News; 7-7.10, London; 7.10, Ever Since Eve (film); rpt. 11.55, Weather; Epilogue; North Channels 9 & 10 (Granada) 2.10 p.m.-4.15, & 5, London; 5.25, Richard the Lionheart; rpt. 5.55, News; 6.5, The Jets; 6.30, Scene at Six-Thirty; 7-8, London; 8, Desilu Mystery Theatre—'The Night the Phone Rang'; Eddie Albert, Margot, 9, News; 9.15-11.5, News; Dateline; 11.20, London; 12, Weather; Wales & West Channel 10 (T.W.W.) 4.24 p.m., Welsh News; Tel. 5, London; 5.25, Rin-Tin-Tin; 5.55, News; 6.15, This Wonderful World; 6.42, Here Today; 7-8, London; 8, Checkmate; 8.55, Police Five; 9, News; 9.15-10.40, London; 10.40, News Gun, Will Travel; 11.7, Dateline; 11.17, Professional Wrestling; 11.40, Weather; Wales (West & North) Channels 4.40 p.m., Birthday Club; 4.45-5.25, London; 5.25, Fury film; 5.55, News; 6.6, Tel (Welsh); 6.45, London; 7, Movie Magazine; 7.30-11.5, London (9, News); Westward TV, Channels 9 & 12 4.43 p.m., Regional News; 4.45-5.25, London; 5.25, Popeye; 5.55, News; 6.5, Flintstones; 6.30, Westward Diary; 6.50, Regional News; 7-10.40, London (9, News); 10.40, Personal File (feature); 11.5, News; 11.7, Dateline; 11.20, London; 12, Weather; Faith for Life; Southern TV, Channels 10 & 11 3 p.m.-4.15, Cricket—Surrey v Lancs; 4.45-5.25, London; 5.25, Pony Express; 5.55, News; 6.5, Day by Day; 6.45-10.40, London (9, News); 10.40, Flying Doctor; rpt. 11.5, News; Dateline; 11.20, London; 12, Weather; The Living Word; Channel Is, TV, Channel 9 4.40 p.m., Puffin's birthday greetings; 4.45-5.25, London; 5.25, Metropolitan Police Band; 11, Orchestras of the World—Berlin Philharmonic; 11.30, Ancient Civilisations—Crete; rpt. 12, Cricket—Yorks v Notts; 12.10, Country Dancing; 12.30, On Your Farm; 12.55, Weather; 1, News; 1.10, Navy Lark; 1.40, Midweek (magazine); 2, Orchestral music; 3, 'Uncle Matthew's Museum' (Keston Clarke play); 3.30, Cricket; 4, Choral Evensong; St. 2, Woman's Hour (2.30, News); 3, Folk Weave—music; 3.30, News; Harry Leader Band; 4.15, The Dales; 4.30, News; Racing results & Cricket scores; 4.35, Playtime reads; 5, Clinton's Cakewalk; 5.30, News; Roundabout; 6.30, Weather, News; Sport; 6.45, The Archers; 7, News; 7.25, Sport; 7.30, News; Yes, It's Great Yarmouth (Variety); 8.30, News; Topic; 8.40, 'Big Bertha' (play); rpt. 9.40, Enchanted Evenings—music; 10.30, News; Sport; 10.35, It's Mark Time—music; 11.30, News; Lennie Felix Trio; 11.55-12, News; NETWORK THREE & THIRD (464, 194m, 91.3, 92.4 Mc/s VHF) Network 3: 6.15 p.m., Jazz Session; 6.45-7.30, Record Review; 11.6-11.11, Market Trends; THIRD: 8, Under Pressure—Czechoslovakia; rpt. 9, Spanish Madrigals & French Chansons; Golden Age Singers; 9.25, Browning's 'An Epistle'; Marius Goring; 9.50, Dvorak & R. W. Wood; Macabbon String Quartet; 10.40-11, The Paracy and the Modern World (talk); rpt. REGIONAL ITEMS Midland (276m), 6.20 p.m.-6.50, Fishermen's Forum; 6.50-6.57, Reeds; Welsh (341m), 6.40 p.m.-6.57, Welsh serial; West (285, 206m), 6.25 p.m.-6.30, Historic Houses—Breamore House, Hants; 6.30-6.57, Scottish dance music; Mary the Virgin's, Ashwell (nr. Baldock), Herts; 4.45, Sad Men Who Yet Rejoice (talk); Gabriel Fielding; 5, Sugar & Spice (magazine); 5.25, 'Sword from the Stars' (serial play); 5.55, Weather; 6, News; 6.15, In the South-East; 6.37, Stock Market report; 7, Twenty Questions; 7.30, Prom Concert—Mozart, Gerhard, Brahms; Sir Malcolm Sargent & Norman Del Mar conduct Norma Procter (con), Malcolm Binns (piano); BBC Men's Chorus & Symphony Orch (16-8-36, Writers on Themselves—Coming to Life in Leeds; Vernon Scannell); 10, News; Comment; 10.30, 'An Unrecorded Instance' (Mrs. Belloc Lowndes play); Brenda Bruce; 10.59, Weather; 11, News; 11.2, Book at Bedtime; 11.15-11.45, Yale University Glee Club; 1.500, 247m, 89.1, 90 Mc/s VHF) 6.30 a.m., Weather, News; Morning Music; 7.30, Weather, News; Swinging Softly; 8, On with the Bands (8.30, Weather, News); 8.55, Weather; 9, Housewives' Choice (9.30, News); 9.55, Story, hymn, prayer; 10, Reginald Dixon (organ); 10.30, Home; 11, Story; 11.15, The Dales; rpt. 11.30, News; Midland Light Orch; 12, Reeds; John Anthony; 12.30, News; Parade of the Pops; 1.30, News; Cricket scores; 1.45, Listen with Mother (for under-fives);

"Hide-Out of Great Train Robbery gang." Daily Telegraph, 14 Aug. 1963, p. 14. The Telegraph Historical Archive, link.gale.com/apps/doc/IO0705639579/DSLAB?u=webdemo&sid=bookmark-DSLAB. Accessed 23 Aug. 2023.